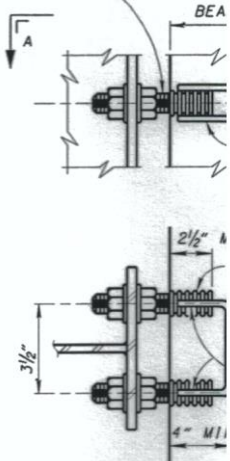
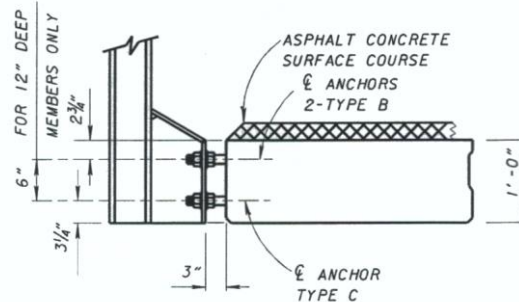
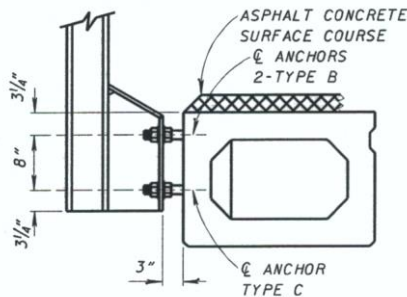


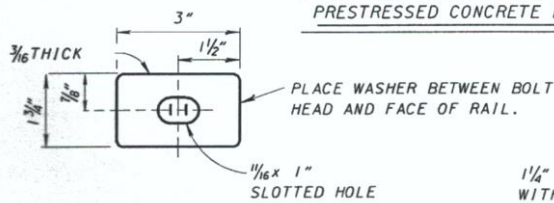
DIMENSION ① IS 6" OR 8" DEPENDING ON BOX BEAM DEPTH. SEE PROJECT PLANS AND POST ANCHORAGE DETAILS, PRESTRESSED CONCRETE BOX BEAMS. FOR DIMENSION ② SEE PROJECT PLANS.

(FOR USE WITH PRESTRESSED CONCRETE BOX BEAMS)

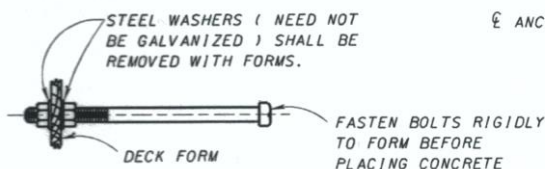
TWO $1\frac{1}{4}$ " x 8" STUDS WITH MACHINE THREADS FULL LENGTH AND TWO HEX NUTS AND TWO $2\frac{1}{2}$ " x $3\frac{1}{2}$ " x $\frac{5}{16}$ " PLATE WASHERS PER STUD.



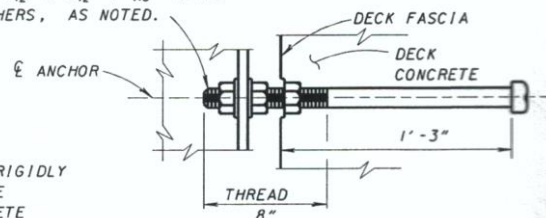
POST ANCHORAGE DETAILS FOR
PRESTRESSED CONCRETE BOX BEAMS



$1\frac{1}{4}$ " Ø x 20" MACHINE BOLT WITH THREE HEX NUTS AND TWO $2\frac{1}{2}$ " x $3\frac{1}{2}$ " x $\frac{5}{16}$ " PLATE WASHERS, AS NOTED.



TYPE A ANCHORS SUPPORTED BY FORMS



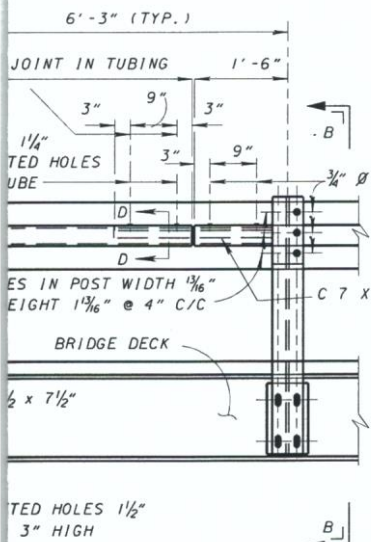
TYPE A ANCHOR DETAIL

SECTION A-A
TYPE C ANCHOR DETAIL

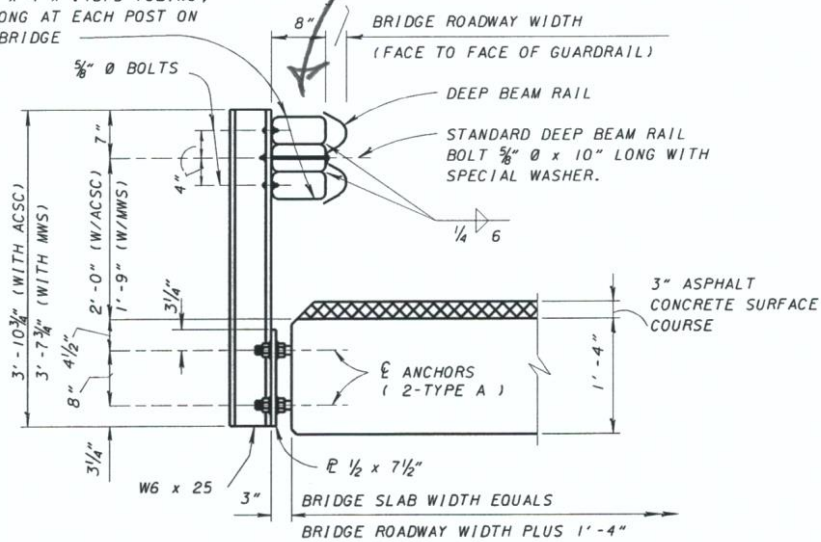
$1\frac{1}{4}$ " x 8" STUD MACHINE THREAD FULL LENGTH AND TWO HEX NUTS AND TWO $2\frac{1}{2}$ " x $3\frac{1}{2}$ " x $\frac{5}{16}$ " PLATE WASHERS

TYPE A ANCHORS SHOULD ONLY BE USED ON PROJECTS WHERE THE ORIGINAL ANCHORS WERE TYPE A AND ALL ANCHORS ON ANY SINGLE STRUCTURE ARE NOT BEING REMOVED OR REPLACED

Tubular
Back up

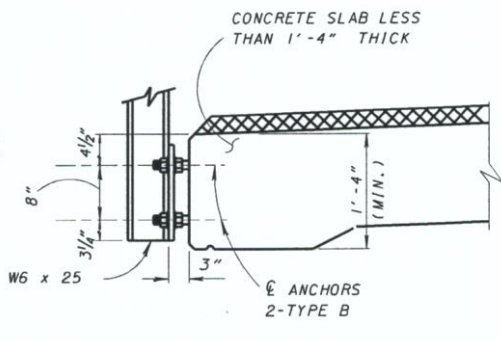
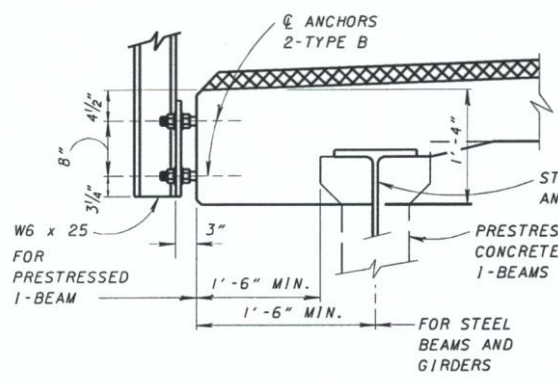
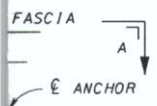


TS 8 x 4 x .1875 TUBING,
6" LONG AT EACH POST ON
THE BRIDGE



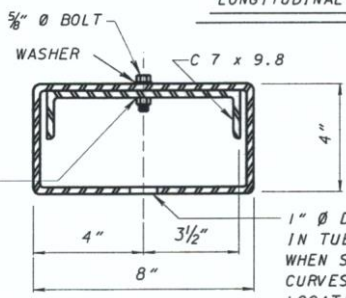
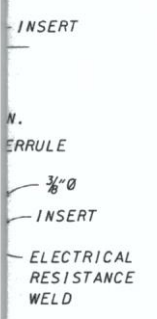
ACSC INDICATES ASPHALT
CONCRETE SURFACE COURSE.
MWS INDICATES MONOLITHIC
WEARING SURFACE.

SECTION B-B
TYPE I POST



LONGITUDINAL BEAM BRIDGES

CONCRETE SLABS
(EDGE BEAM SHOWN)



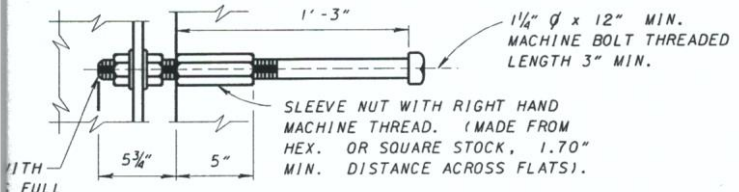
POST ANCHORAGE DETAILS
(NOT FOR USE WITH PRESTRESSED BOX BEAMS)

MATERIAL: ALL ANCHOR BOLTS, NUTS AND STUDS SHALL CONFORM TO THE PHYSICAL PROPERTIES OF ASTM-A325 EXCEPT THAT THE ELONGATION SHALL BE 10% AND THE THREAD LENGTH REQUIREMENTS SHALL BE WAIVED. THE CHEMICAL PROPERTIES ARE WAIVED.

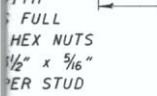
STEEL TUBING SHALL BE AS PER ITEM 707.10. ALL GUARDRAIL POSTS AND PLATE WASHERS SHALL BE ASTM A709 GRADE 36 OR 50.

GALVANIZING: ALL GUARDRAIL POSTS, TUBES, HARDWARE AND ACCESSORIES SHALL BE GALVANIZED IN ACCORDANCE WITH 711.02, EXCEPT AS OTHERWISE NOTED.

TYPE C ANCHOR INSERTS OF A DIFFERENT TYPE MAY BE PROVIDED IF APPROVED BY THE DIRECTOR.



TYPE B ANCHOR DETAIL



DESIGN AGENCY
OFFICE OF
STRUCTURAL
ENGINEERING

STATE OF OHIO DEPARTMENT OF TRANSPORTATION
Robert B. Pflieger
ENGINEER OF BRIDGES
4-10-73
DATE

CHECKED
JAM
DESIGNED
JFF
DRAWN
BEE
REVIEWED
LMW
DBR-2-7-3

REVISIONS
9-15-94
10-20-00
07-19-02

STANDARD
DEEP BEAM
BRIDGE GUARDRAIL